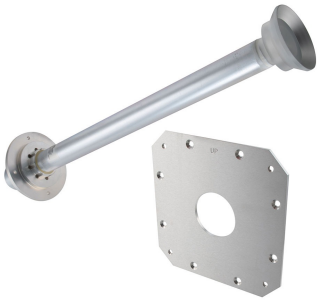


Retrofit Kit for 6' (1.8M) Parabolic, Upgrade Existing
Direct Mount to Remec Circular, 5.725 to 7.125 GHz

RFK-OEM-R-6-6



The Parabolic Reflector Retrofit Kits by RadioWaves allow previously deployed Antennas to be upgraded to the latest radios on the market. These kits come with new feed horns, interface, and mounting hardware needed for rapid installation, under budget!

The RFK-OEM-R-6-6 will allow you to directly interface an existing direct mount HP6 parabolic antenna to a Remec series radio. This kit is designed for 6 ft | 1.8 m reflectors to be coupled with radios operating from 5.725 GHz to 7.125 GHz Frequency range with Single Polarization Circular waveguide interface. If it's rugged, it must be RadioWaves!

General Specifications

| | | | |
|---------------|----------------------------------|--------------------|--------|
| Antenna Type | Parabolic Reflector Retrofit Kit | Radio Manufacturer | Remec |
| Size, nominal | 6 ft 1.8 m | Polarization | Single |
| Waveguide | Circular | | |

Electrical Specifications

| | |
|--------------------------|------------------------|
| Operating Frequency Band | 5.725 GHz to 7.125 GHz |
|--------------------------|------------------------|

TECHNICAL DRAWINGS

