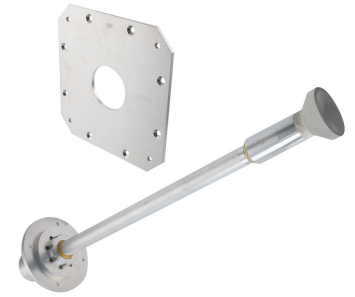


Retrofit Kit for 6' (1.8M) Parabolic, Upgrade Existing  
Direct Mount to Remec Rectangular, 10.7 to 11.7 GHz

**RFK-OEM-RR-6-11**



The Parabolic Reflector Retrofit Kits by RadioWaves allow previously deployed Antennas to be upgraded to the latest radios on the market. These kits come with new feed horns, interface, and mounting hardware needed for rapid installation, under budget!

The RFK-OEM-RR-6-11 will allow you to directly interface an existing direct mount HP6 parabolic antenna to a Remec series radio. This kit is designed for 6 ft | 1.8 m reflectors to be coupled with radios operating from 10.7 GHz to 11.7 GHz Frequency range with Single Polarization Rectangular waveguide interface. If it's rugged, it must be RadioWaves!

**General Specifications**

Antenna Type	Parabolic Reflector Retrofit Kit
Size, nominal	6 ft   1.8 m
Waveguide	Rectangular

Radio Manufacturer	Remec
Polarization	Single

**Electrical Specifications**

Operating Frequency Band	10.7 GHz to 11.7 GHz
--------------------------	----------------------

TECHNICAL DRAWINGS

