

0.9 m | 3 ft Standard Performance Parabolic Reflector Antenna, Single-polarized, 7.125-7.75GHz

## SP3-7



The SP Standard Performance Series by RadioWaves offers a full line of cost effective standard performance parabolic antennas engineered to deliver reliable radio links. Designed for both unlicensed and licensed band applications, RadioWaves field-proven pre-assembled SP antennas and robust pole-mounts ensure “set and forget” installation with minimal post-installation maintenance. If it’s rugged, it must be RadioWaves!

### FEATURES AND BENEFITS

- Standard Performance Parabolic Antennas – Excellent performance for a wide range of licensed and unlicensed applications
- Fully Preassembled at the Factory – Simplifies installation on site and guarantees “factory-tested” quality

### SPECIFICATIONS

#### General

|               |  |
|---------------|--|
| Antenna Type  | Standard Performance Parabolic Reflector Antenna |
| Size, nominal | 3 ft   0.9 m                                     |
| Polarization  | Single   |

|                              |                                    |
|------------------------------|------------------------------------|
| Standard RF Connector Type   | CPR112G                            |
| Standard RF Connector Suffix | RS (append suffix to model number) |

#### Electrical

|                                   |                  |
|-----------------------------------|------------------|
| Operating Frequency Band          | 7.125 - 7.75 GHz |
| Half Power Beamwidth, Horizontal  | 3 degrees        |
| Half Power Beamwidth, Vertical    | 3 degrees        |
| Cross-Polarization Discrimination | 30 dB            |
| Front to Back Ratio (F/B)         | 43 dB            |

|                      |          |
|----------------------|----------|
| Gain, Low Frequency  | 33.9 dBi |
| Gain, Mid Frequency  | 34.1 dBi |
| Gain, High Frequency | 34.6 dBi |
| VSWR                 | 1.37:1   |
| Return Loss          | -16.1 dB |

## Mechanical

|                               |                    |                                 |
|-------------------------------|--------------------|---------------------------------|
| Fine Azimuth Adjustment       | +/- 10 degrees     |                                 |
| Fine Elevation Adjustment     | +/- 25 degrees     |                                 |
| Mounting Pipe Diameter, Min   | 4.5 inch   11.4 cm |                                 |
| Mounting Pipe Diameter, Max   | 4.5 inch   11.4 cm |                                 |
| Net Weight                    | 35 lbs   15.8 kg   | 43 lbs   19.4 Kg with RD radome |
| Wind Velocity Operational     | 90 mph   145 km/h  |                                 |
| Wind Velocity Survival Rating | 125 mph   201 km/h |                                 |

|  |                     |                                  |
|--|---------------------|----------------------------------|
| Mechanical Configuration                     | SP3                 |                                  |
| Axial Force (FA)                             | 492 lbs   2189 N    | 271 lbs   1206 Nm with RD radome |
| Side Force (FS)                              | 40 lbs   178 N      | 64 lbs   285 Nm with RD radome   |
| Twisting Moment (MT)                         | 545 ft-lbs   739 Nm | 394 lbs   534 Nm with RD radome  |
| Operating Temperature Range                  | -40 to +60 C        |                                  |
| Max Pressure, PSIG, (if waveguide interface) | 5                   |                                  |

## Regulatory Compliance

|                            |            |
|----------------------------|------------|
| FCC                        | undeclared |
| Industry Canada Compliance | undeclared |

|                |              |
|----------------|--------------|
| ETSI           | 302217 R1 C1 |
| RoHS-compliant | Yes          |

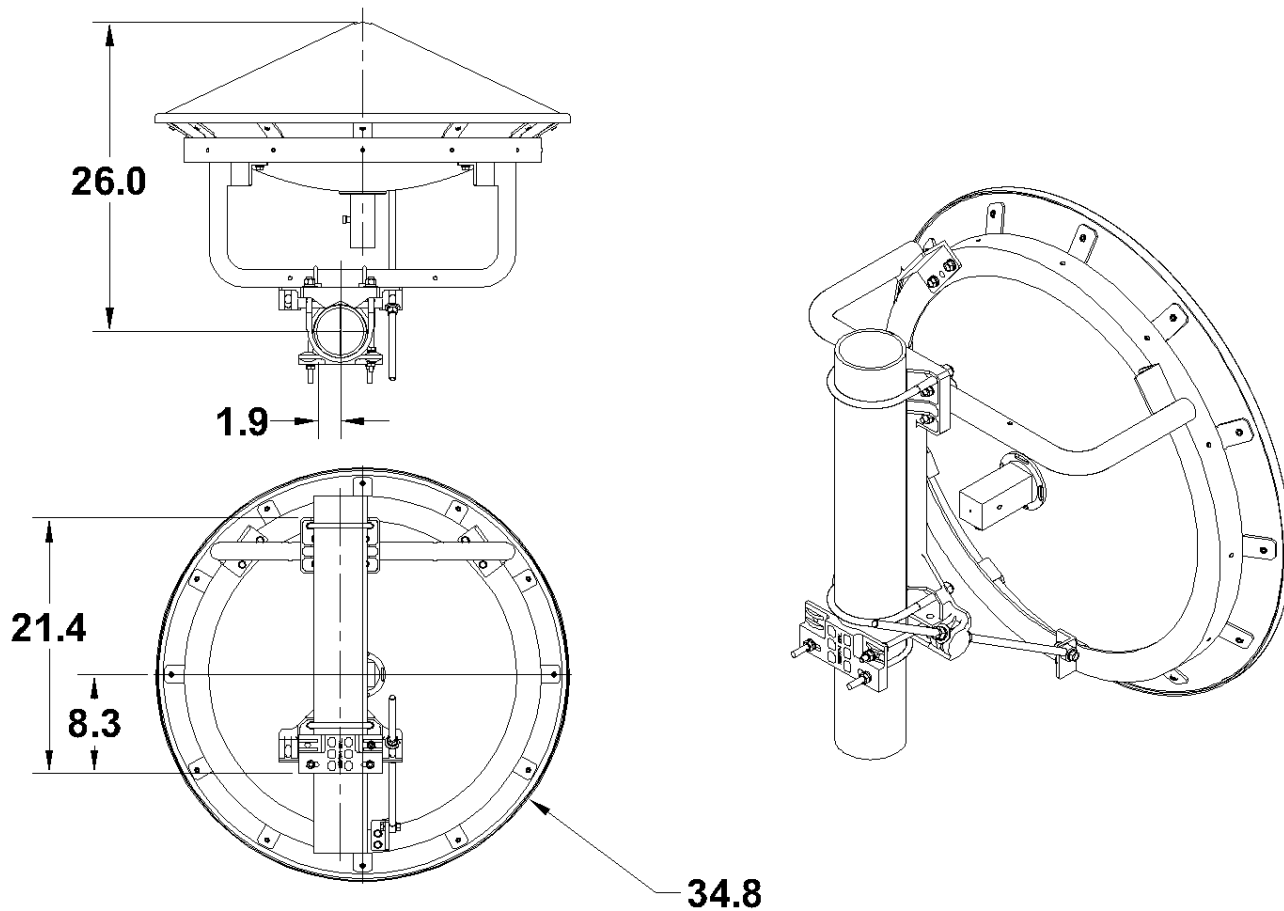
## Shipping Information

|              |                  |
|--------------|------------------|
| Package Type | Wood Crate       |
| Gross Weight | 78 lbs   35.3 kg |

|                       |                                    |
|-----------------------|------------------------------------|
| Dimensions, L x W x H | 40 x 17 x 44in   101 x 43 x 140 cm |
| Shipping Volume       | 17.31 cu ft   0.49 cu m            |

\*Additional OEM interfaces and adapters may be available. Contact RadioWaves for a complete and current list of available adapters.

TECHNICAL DRAWINGS



**SP3**