

0.9 m | 3 ft Standard Performance Parabolic Reflector Antenna, Dual-polarized, 5.92-6.42GHz

## SPD3-5.9



The SP Standard Performance Series by RadioWaves offers a full line of cost effective standard performance parabolic antennas engineered to deliver reliable radio links. Designed for both unlicensed and licensed band applications, RadioWaves field-proven pre-assembled SP antennas and robust pole-mounts ensure “set and forget” installation with minimal post-installation maintenance. If it’s rugged, it must be RadioWaves!

### FEATURES AND BENEFITS

- Standard Performance Parabolic Antennas – Excellent performance for a wide range of licensed and unlicensed applications
- Fully Preassembled at the Factory – Simplifies installation on site and guarantees “factory-tested” quality

## SPECIFICATIONS

### General

Antenna Type	Standard Performance Parabolic Reflector Antenna
Size, nominal	3 ft   0.9 m
Polarization	Dual
Standard RF Connector Type	CPR137G

Standard RF Connector Suffix	RS (append suffix to model number)
General Specifications 1	na
General Specifications 2	na

### Electrical

Operating Frequency Band	5.92 - 6.42 GHz
Half Power Beamwidth, Horizontal	3.7 degrees
Half Power Beamwidth, Vertical	3.7 degrees
Cross-Polarization Discrimination	28 dB
Front to Back Ratio (F/B)	40 dB
Gain, Low Frequency	32.5 dBi

Gain, Mid Frequency	33 dBi
Gain, High Frequency	33.5 dBi
VSWR	1.37:1
Return Loss	-15 dB
Electrical Specifications 1	na
Electrical Specifications 2	na

## Mechanical

Fine Azimuth Adjustment	+/- 10 degrees	
Fine Elevation Adjustment	+/- 25 degrees	
Mounting Pipe Diameter, Min	4.5 inch   11.4 cm	
Mounting Pipe Diameter, Max	4.5 inch   11.4 cm	
Net Weight	35 lbs   15.8 kg	43 lbs   19.4 Kg with RD radome
Wind Velocity Operational	90 mph   145 km/h	
Wind Velocity Survival Rating	125 mph   201 km/h	
Mechanical Configuration	SP3	

Axial Force (FA)	492 lbs   2189 N	271 lbs   1206 Nm with RD radome
Side Force (FS)	40 lbs   178 N	64 lbs   285 Nm with RD radome
Twisting Moment (MT)	545 ft-lbs   739 Nm	394 lbs   534 Nm with RD radome
Operating Temperature Range	-40 to +60 C	
Max Pressure, PSIG, (if waveguide interface)	5	
Mechanical Specifications 1	na	
Mechanical Specifications 2	na	

## Regulatory Compliance

FCC	undeclared
Industry Canada Compliance	undeclared

ETSI	undeclared
RoHS-compliant	Yes

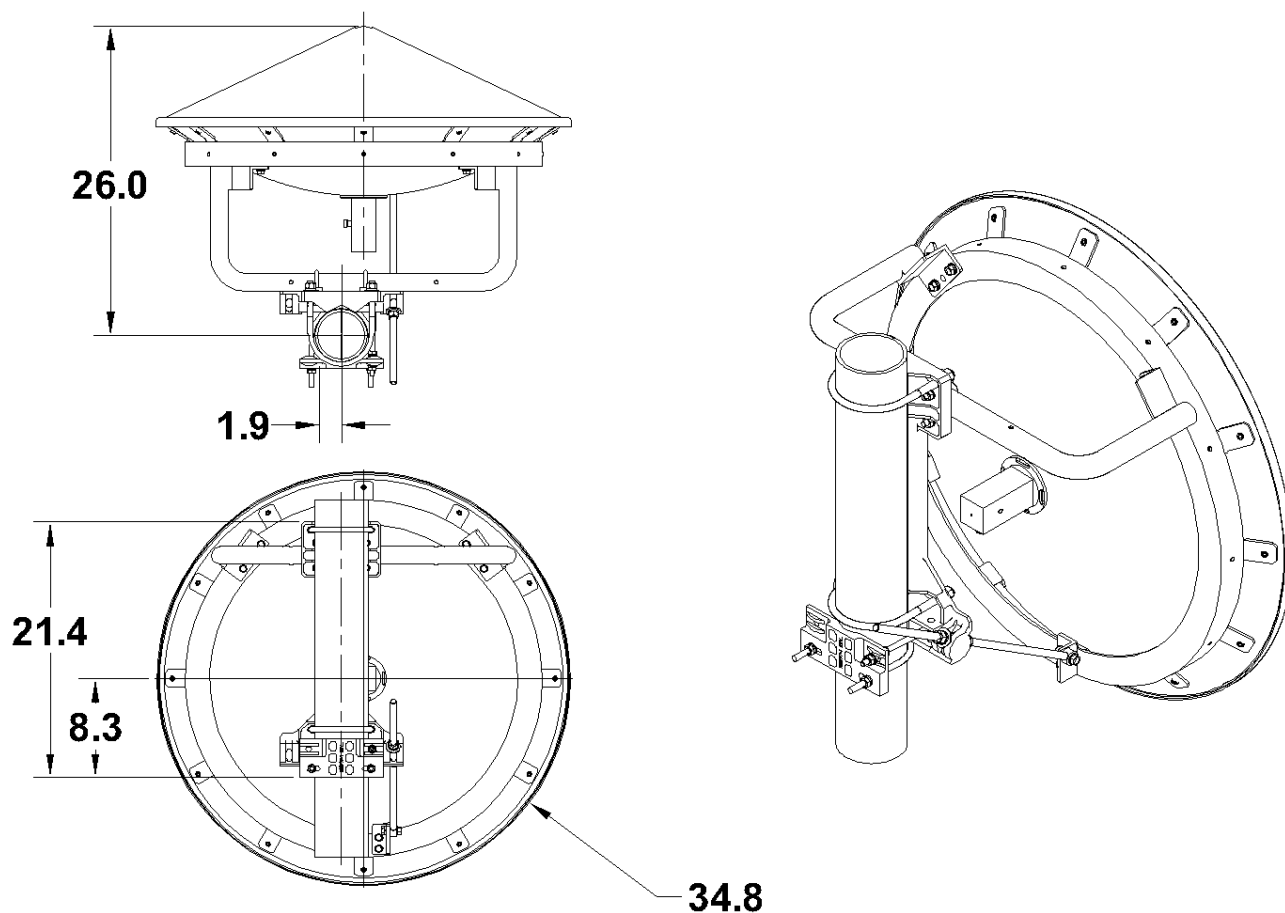
## Shipping Information

Package Type	Wood Crate
Gross Weight	78 lbs   35.3 kg

Dimensions, L x W x H	40 x 17 x 4in   101 x 43 x 140 cm
Shipping Volume	17.31 cu ft   0.49 cu m

\*Additional OEM interfaces and adapters may be available. Contact RadioWaves for a complete and current list of available adapters.

TECHNICAL DRAWINGS



**SP3**