

1.8 m | 6 ft Standard Performance Parabolic Reflector Antenna, Single-polarized, 5.925-6.425GHz

SP6-5.9



The SP Standard Performance Series by RadioWaves offers a full line of cost effective standard performance parabolic antennas engineered to deliver reliable radio links. Designed for both unlicensed and licensed band applications, RadioWaves field-proven pre-assembled SP antennas and robust pole-mounts ensure “set and forget” installation with minimal post-installation maintenance. If it’s rugged, it must be RadioWaves!

FEATURES AND BENEFITS

- Standard Performance Parabolic Antennas – Excellent performance for a wide range of licensed and unlicensed applications
- Fully Preassembled at the Factory – Simplifies installation on site and guarantees “factory-tested” quality

SPECIFICATIONS

General

| | |
|---------------|--|
| Antenna Type | Standard Performance Parabolic Reflector Antenna |
| Size, nominal | 6 ft 1.8 m |
| Polarization | Single |

| | |
|------------------------------|------------------------------------|
| Standard RF Connector Type | CPR137G |
| Standard RF Connector Suffix | RS (append suffix to model number) |

Electrical

| | |
|-----------------------------------|-------------------|
| Operating Frequency Band | 5.925 - 6.425 GHz |
| Half Power Beamwidth, Horizontal | 1.9 degrees |
| Half Power Beamwidth, Vertical | 1.9 degrees |
| Cross-Polarization Discrimination | 30 dB |
| Front to Back Ratio (F/B) | 46 dB |

| | |
|----------------------|----------|
| Gain, Low Frequency | 38.7 dBi |
| Gain, Mid Frequency | 39.2 dBi |
| Gain, High Frequency | 39.5 dBi |
| VSWR | 1.37:1 |
| Return Loss | -16.1 dB |

Mechanical

| | | |
|-------------------------------|--------------------|----------------------------------|
| Fine Azimuth Adjustment | +/- 10 degrees | |
| Fine Elevation Adjustment | +/- 25 degrees | |
| Mounting Pipe Diameter, Min | 4.5 inch 11.4 cm | |
| Mounting Pipe Diameter, Max | 4.5 inch 11.4 cm | |
| Net Weight | 95 lbs 42.8 kg | 125 lbs 56.3 Kg with RD radome |
| Wind Velocity Operational | 90 mph 145 km/h | |
| Wind Velocity Survival Rating | 125 mph 201 km/h | |

| | | |
|--|-----------------------|-----------------------------------|
| Mechanical Configuration | SP6 | |
| Axial Force (FA) | 1768 lbs 7865 N | 973 lbs 4329 Nm with RD radome |
| Side Force (FS) | 98 lbs 436 N | 162 lbs 721 Nm with RD radome |
| Twisting Moment (MT) | 2270 ft-lbs 3077 Nm | 2100 lbs 2847 Nm with RD radome |
| Operating Temperature Range | -40 to +60 C | |
| Max Pressure, PSIG, (if waveguide interface) | 5 | |

Regulatory Compliance

| | |
|----------------------------|------------------|
| FCC | Part 101 Cat. B1 |
| Industry Canada Compliance | SRSP305.9B |

| | |
|----------------|-------------|
| ETSI | 302217 R1C1 |
| RoHS-compliant | Yes |

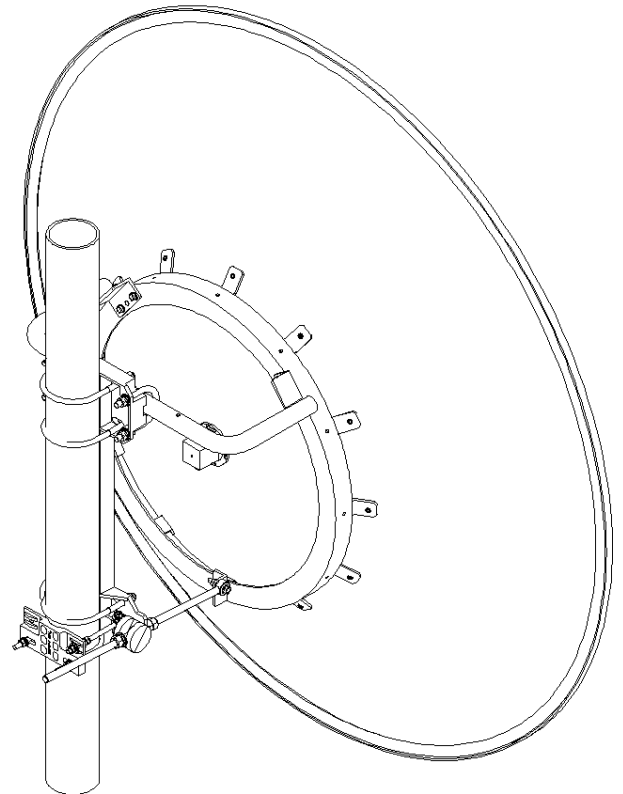
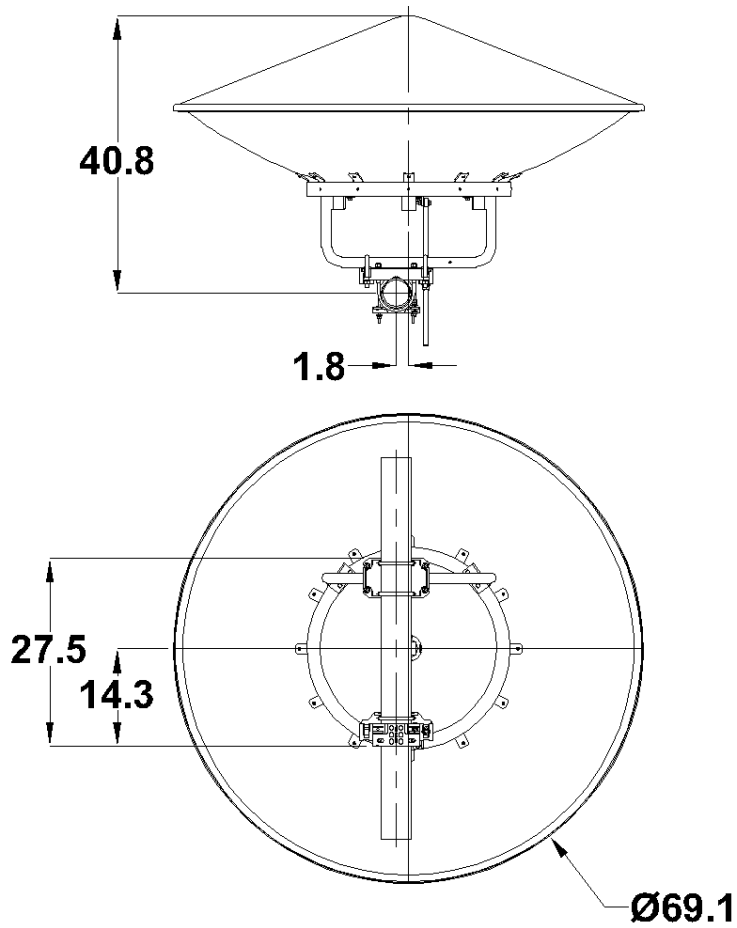
Shipping Information

| | |
|--------------|--------------------|
| Package Type | Wood Crate |
| Gross Weight | 222 lbs 100.7 kg |

| | |
|-----------------------|-------------------------------------|
| Dimensions, L x W x H | 77 x 20 x 80in 195 x 501 x 203 cm |
| Shipping Volume | 71.3 cu ft 2.02 cu m |

*Additional OEM interfaces and adapters may be available. Contact RadioWaves for a complete and current list of available adapters.

TECHNICAL DRAWINGS



SP-6