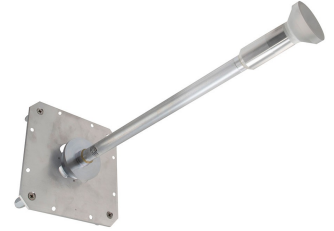


Retrofit Kit for 6' (1.8M) Parabolic, Upgrade Existing
Direct Mount to Mimosa B11, 10.7 to 11.7 GHz

RFK-OEM-MMS-6-11



The Parabolic Reflector Retrofit Kits by RadioWaves allow previously deployed Antennas to be upgraded to the latest radios on the market. These kits come with new feed horns, interface, and mounting hardware needed for rapid installation, under budget!

The RFK-OEM-MMS-6-11 will allow you to directly interface an existing direct mount HP6 parabolic antenna to a Mimosa B11 series radio. This kit is designed for 6 ft | 1.8 m reflectors to be coupled with radios operating from 10.7 GHz to 11.7 GHz Frequency range with Dual Polarization Circular waveguide interface. If it's rugged, it must be RadioWaves!

General Specifications

Antenna Type	Parabolic Reflector Retrofit Kit
Size, nominal	6 ft 1.8 m
Waveguide	Circular

Radio Manufacturer	Mimosa
Polarization	Dual

Electrical Specifications

Operating Frequency Band	10.7 GHz to 11.7 GHz
--------------------------	----------------------

TECHNICAL DRAWINGS

