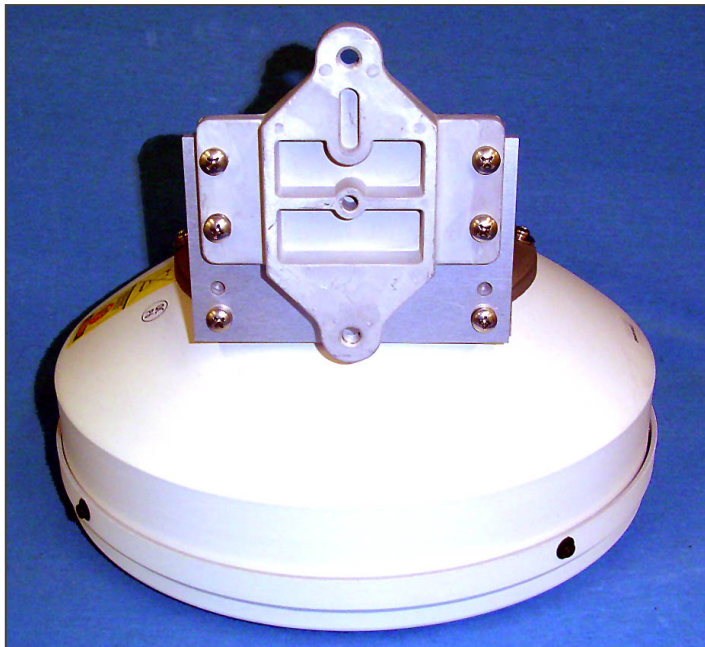


Additional Instructions

SP1 Series Antennas



an INFINIT[®] company

IMPORTANT!

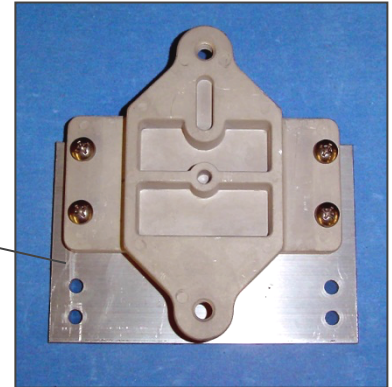
Please read instructions through completely before beginning installation. Caution should be used. Qualified persons experienced with antenna assembly and installation are required for installation.

DISCLAIMER

Radio Waves Inc. disclaims any responsibility or liability for damage or injury resulting from incorrect or unsafe installation practices.

- 1) In addition to the items listed in Pole Mount Installation Guide AP103230-1, you will receive a “diamond” mount adapter plate attached to a flat adapter plate with your SP1 series antenna. These plates are shipped in the same box as the antenna, and packed with the pole mount. You will need a #2 Phillips screw driver to install the plates.

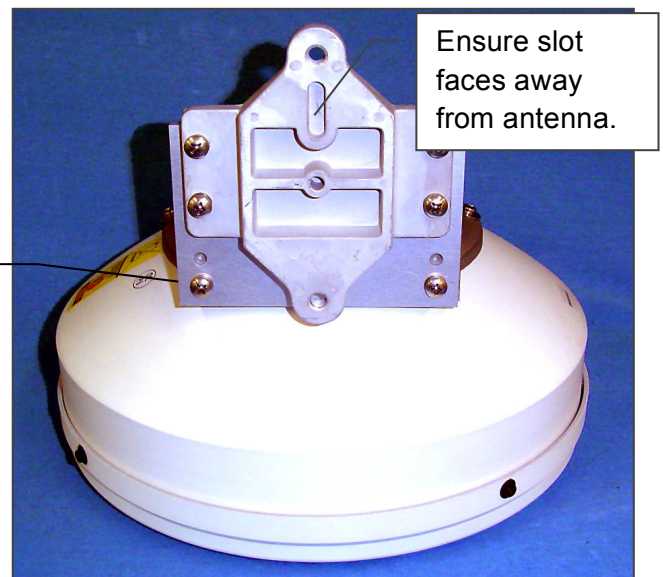
“Diamond” Mount
adapter plate attached to
flat adapter plate



- 2) Prior to attaching the mount assembly to the pole, install mount adapter plates on antenna as shown. Tighten securely.

Flat Adapter plate: Attach using
(2) 1/4-20 screws, lock washers
and flat washers provided with
antenna. Use holes nearest
edge of plate as shown.

Tighten securely.



- 3) Proceed with installation and adjustment per Pole Mount Installation Guide FP103230-1

Mounting Options

To Install for Left Side Pole Mount –

1. Place Antenna on Flat Surface
2. Remove (4) 10-32 screws that attach Antenna Mount to the Flange
3. Carefully rotate Antenna 180 degrees
4. Re-attach Antenna Mount to Flange
5. Drain Hole (Bottom) should be facing the ground (applicable if radome is installed)

To Change Polarization –

1. Remove (4) 8-32 screws that attach the Feed to the Reflector
2. Carefully rotate the Feed 90 degrees
3. Re-install hardware and tighten.

Note: For Dual Band Antennas, the Feed is factory installed for 2.44GHz Vertical & 5.8GHz Horizontal.
For Single Band Antennas, the Feed is factory installed Vertical Polarization.

SAFETY INFORMATION

This Information May Save You From Death or Injury

Do not attempt to install or dismantle any Radio Waves Inc. products until you have read and understood the information and instructions in this document.

Installations: Only trained professional installers should be used to install or dismantle antennas, mounts, and related hardware. It is the responsibility of the installer to be sure that all building and safety codes are met and that the installation is complete and secure.

Lightning Protection: All antennas and related hardware must be attached to and connected correctly to a properly grounded structure. It is the responsibility of the installer to be sure that the installation is completed in accordance with all applicable grounding and safety codes.

Electrocution Hazard: Do not install or dismantle Radio Waves Inc. products near any type of power line. Should your antenna or related hardware come in contact with power lines you **could be killed!** Be sure your installation is out of falling distance of any overhead wires-including the lead to any building or structure.

NEVER OPERATE OR LOCATE THIS OR ANY EQUIPMENT NEAR POWER LINES

Electrocution Hazard: Portable or Mobile Installation.

If you are installing a Radio Waves Inc. component or part on a portable or mobile platform such as a Portable Tripod, Mast, Truck, or Van, be sure all safety procedures are followed and that operators have been properly trained. No one should be allowed to operate or set up the equipment that has not been properly trained. Radio Waves Inc. is a component supplier and is not the system designer and has no control over how its products are used and installed.

It is the responsibility of the System Designer, Van Manufacturer and Owner / Operator to be sure that the overall system is built in accordance with all applicable design and safety standards and procedures and that the operators have been properly trained.

NEVER OPERATE OR LOCATE THIS OR ANY EQUIPMENT NEAR POWER LINES

