

6 Ft. Offset Pole Mount Installation Guide



an INFINIT^e company

IMPORTANT!

Please read instructions through completely before beginning installation. Caution should be used. Qualified persons experienced with antenna assembly and installation are required for installation.

DISCLAIMER

Radio Waves Inc. disclaims any responsibility or liability for damage or injury resulting from incorrect or unsafe installation practices.

Your HP6 Antenna shipped to you in one crate containing the following components:

1. HP6 Antenna Assembly
2. Antenna Mounting Kit
3. Reflector Support Strut/Azimuth Adjust assembly

Note: Options and accessories are shipped separately and include separate installation guides. Check the packing slip.

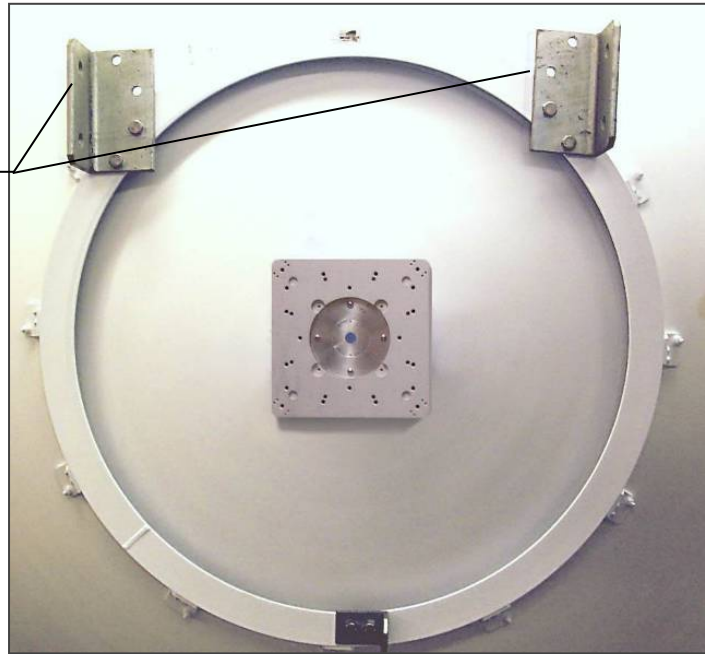
You will need the following tools to complete the assembly of the antenna at the site:

1. $\frac{3}{4}$ " Open/box wrench or socket wrench
2. 15/16" Open/box wrench or socket wrench
3. 9/16" Open/box wrench or socket wrench
4. Adjustable Wrench
5. Torque Wrench with appropriate sockets

NOTE: The pictures provided in this document are for illustrative purposes only and may not be identical to your antenna system.

The Mounting Assembly:

Reflector
mounting tabs



Right Hand Offset

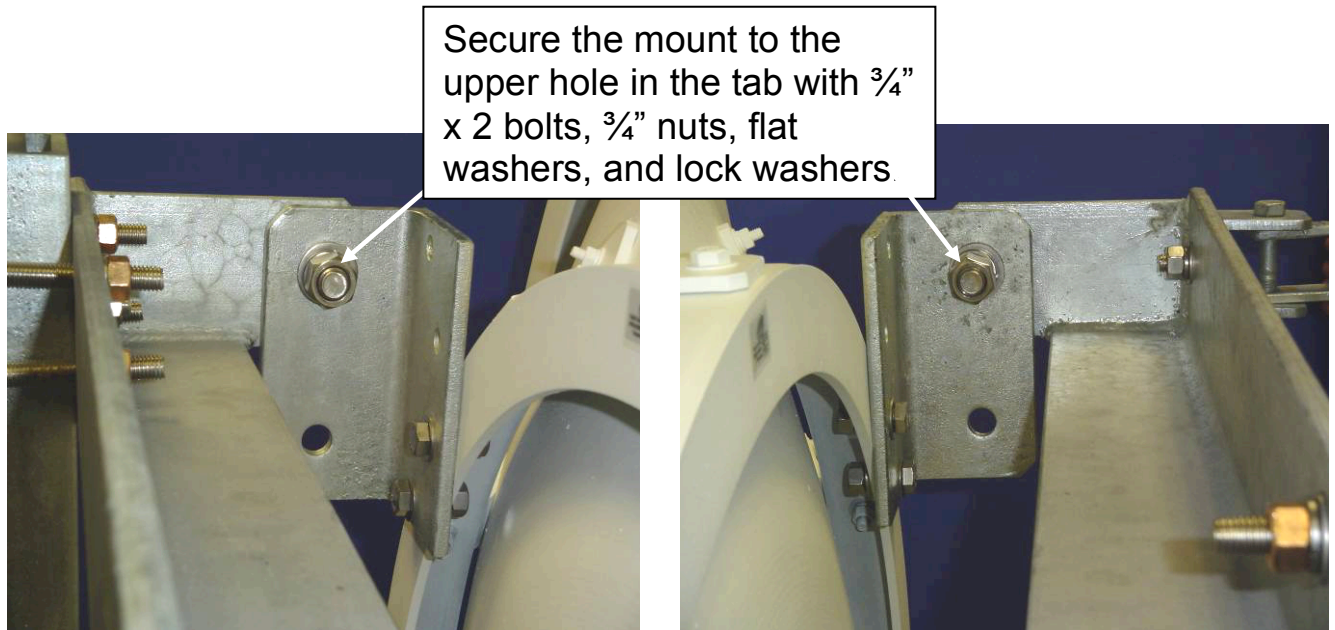


Left Hand Offset

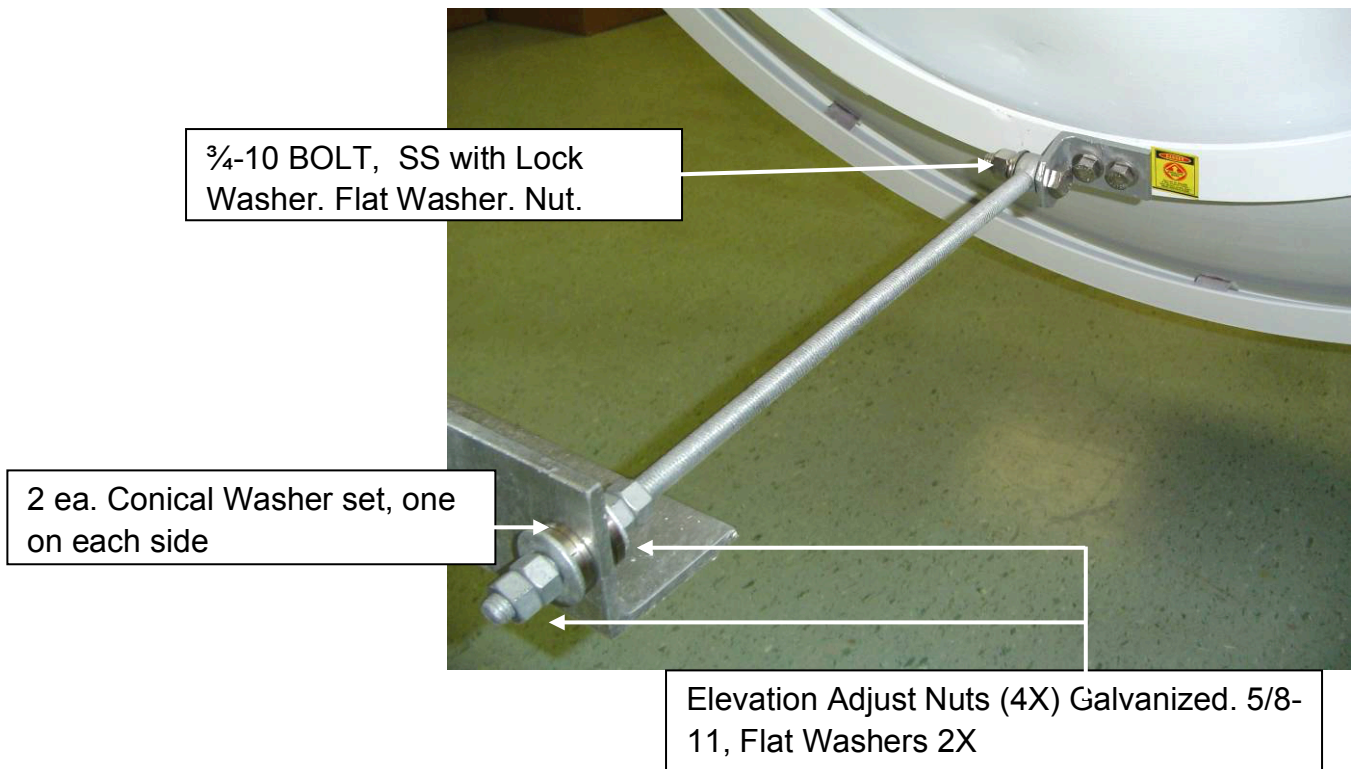


NOTE: From this point forward, Right Hand Offset is shown.

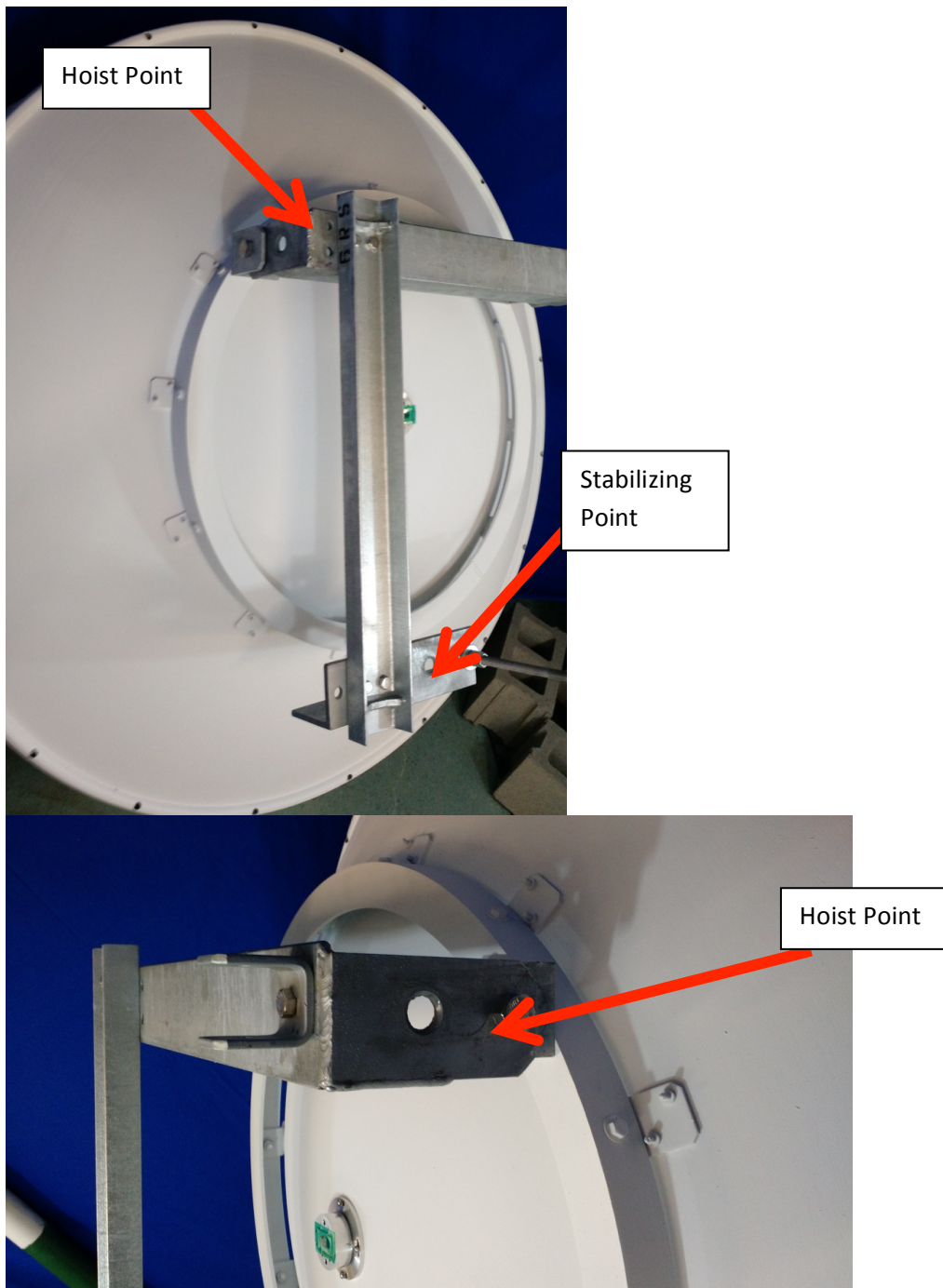
1. Insert the ring tabs into the Pole Mount.



2. Attach the Elevation Shaft to the reflector and the mount

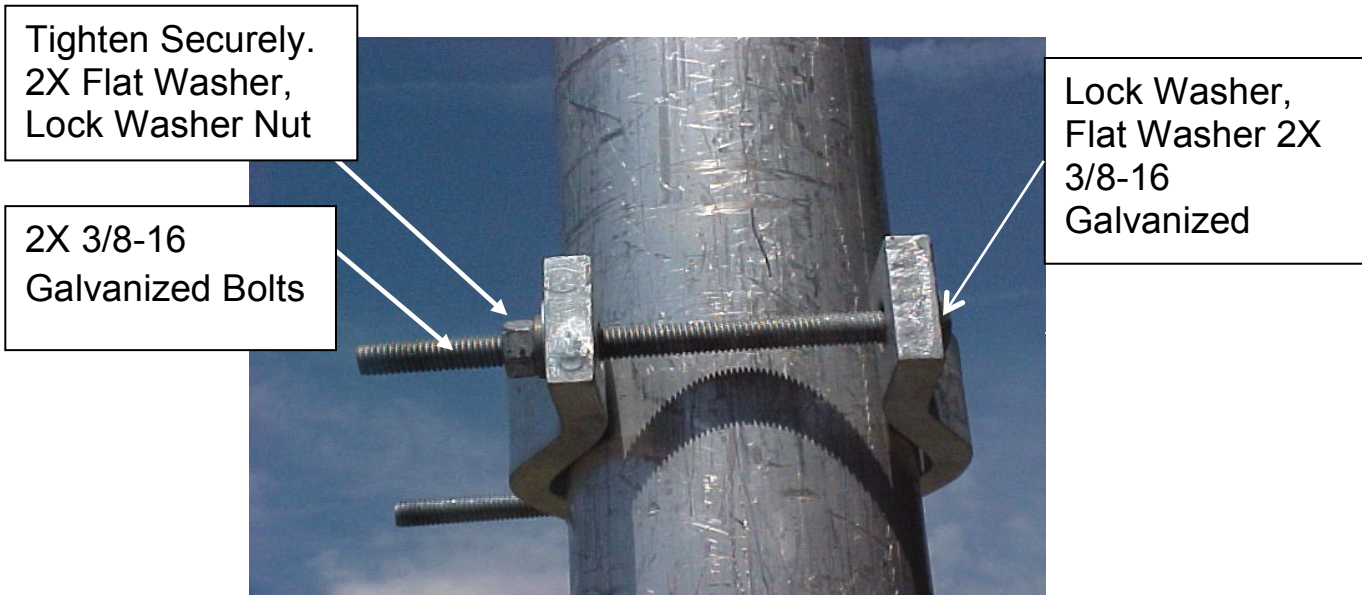


3. Hoist to mounting location via indicated hoist and stabilizing points.

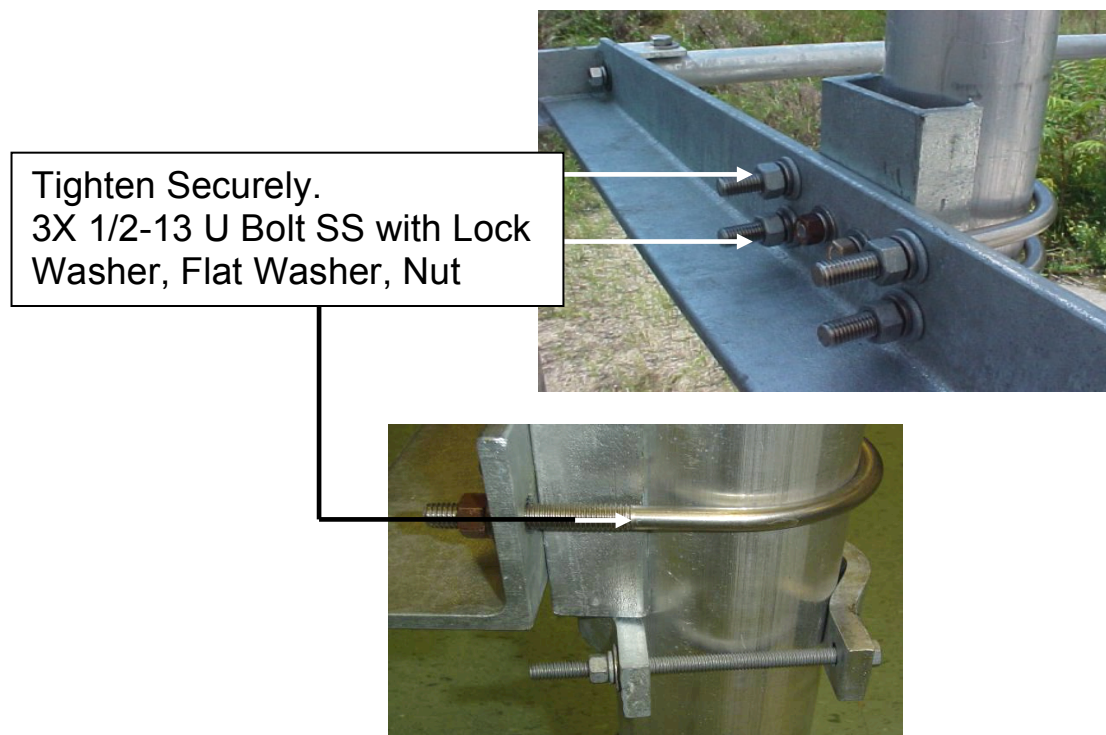


4. **Feed Orientation:** If Plane Feed has been ordered, the factory default is Vertical Polarization. Refer to supplemental instructions to adjust the feed to horizontal polarization.

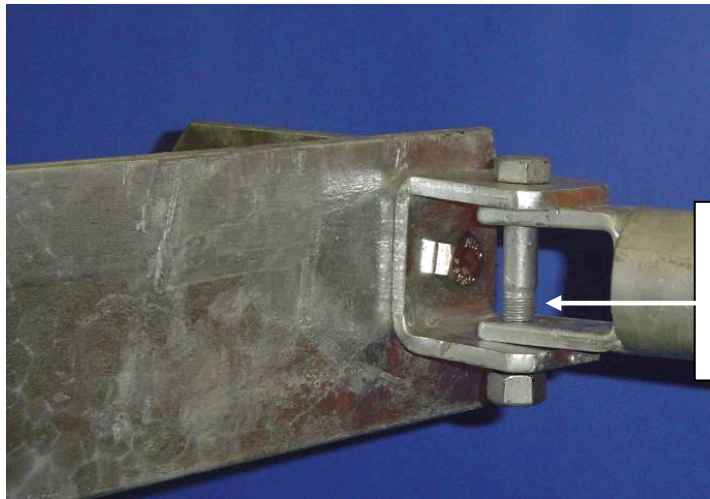
5. Fasten the Shear Stop to 4.5" OD mounting pipe.



6. Fasten antenna and mount to pole. Note pole mount rests on the pipe clamp U-bolt.

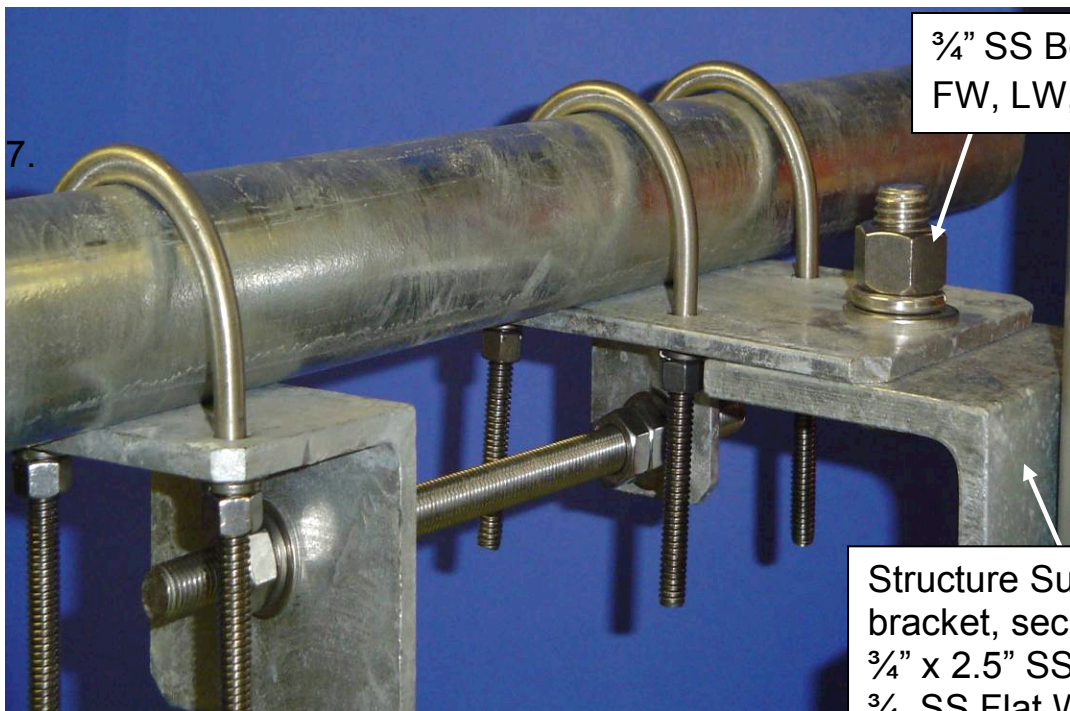


7. Attach Strut to Antenna Mount.



1/2 - 13 x 3" galvanized bolt, 1/2 - 13 lock washer and nut, galvanized.

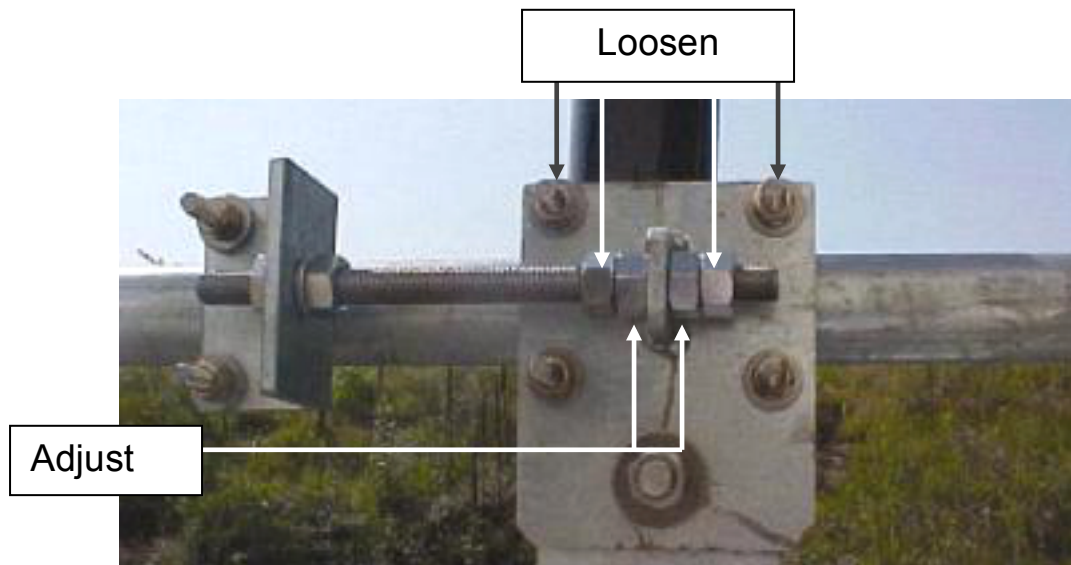
8. Attach Strut to Tower.



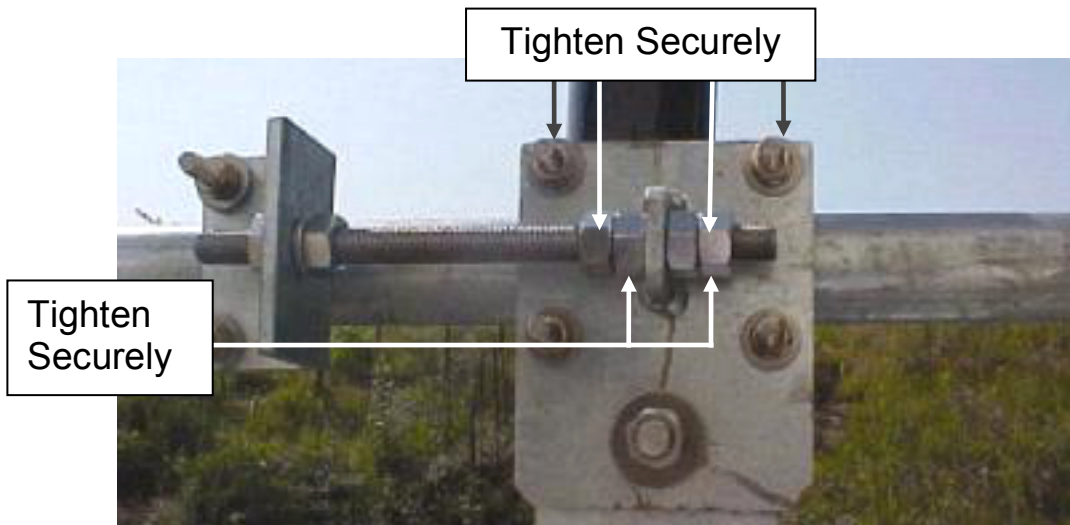
3/4" SS Bolt with FW, LW, Nut

Structure Support bracket, secured with 3/4" x 2.5" SS Bolt, and 3/4 SS Flat Washer, Lock Washer, Nut

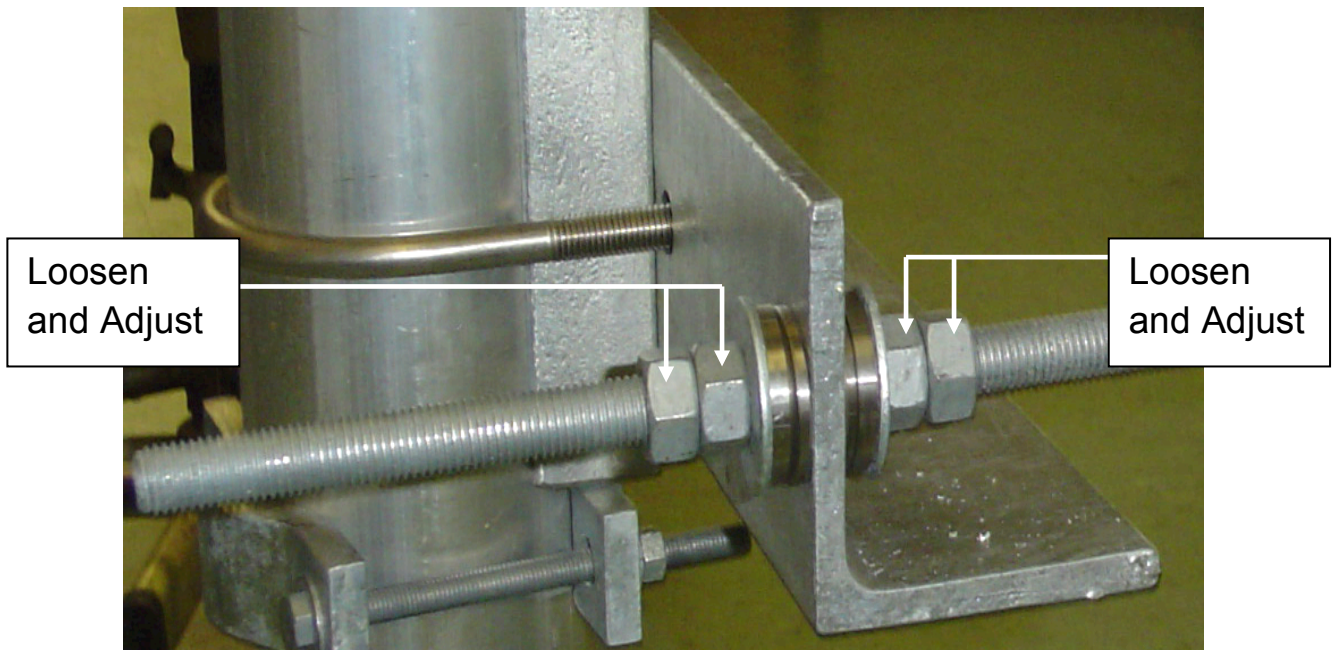
9. Adjust Azimuth



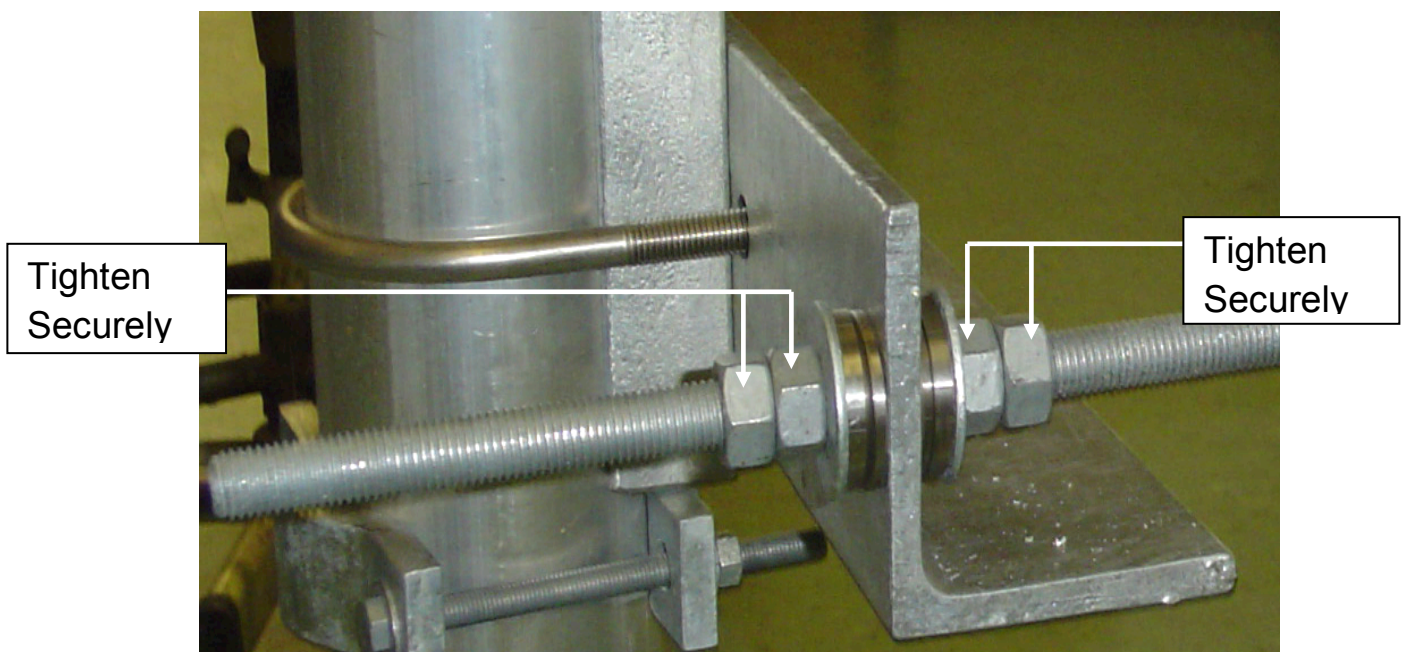
10. Set Azimuth Adjustment.



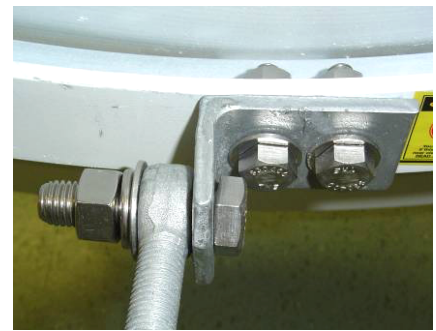
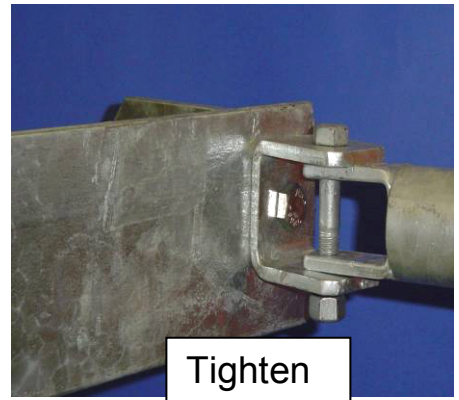
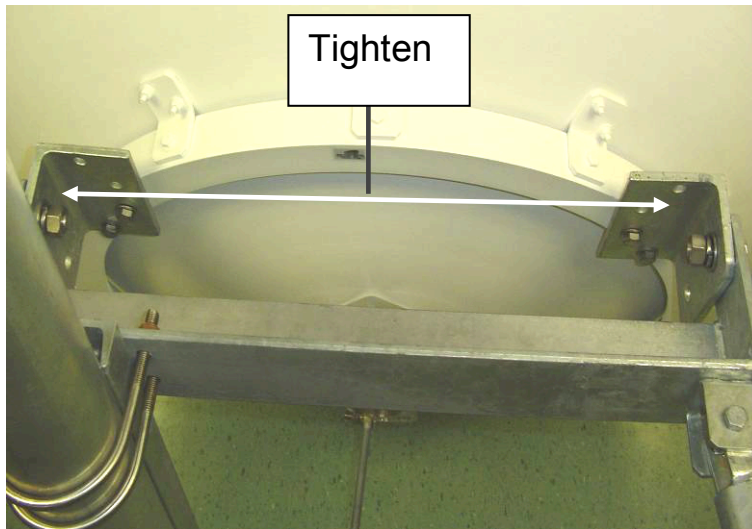
11. Elevation Adjustment



12. Set elevation Adjustment



13. Tighten all hardware using torque specifications below:



Torque Specifications:

Standard Minimum values per bolt size

Nominal Bolt Size (Inches)	Nut Torque
1/4	50 in-lb
5/16	102 in-lb
3/8	15 ft-lb
7/16	24 ft-lb
1/2	37 ft-lb
5/8	60 ft-lb
3/4	75 ft-lb

After the installation:

Inspection of the antenna should be performed at least once a year to check its condition and to ensure safe operation and maintenance.

SAFETY INFORMATION

This Information May Save You From Death or Injury

Do not attempt to install or dismantle any Radio Waves Inc. products until you have read and understood the information and instructions in this document.

Installations: Only trained professional installers should be used to install or dismantle antennas, mounts, and related hardware. It is the responsibility of the installer to be sure that all building and safety codes are met and that the installation is complete and secure.

Lightning Protection: All antennas and related hardware must be attached to and connected correctly to a properly grounded structure. It is the responsibility of the installer to be sure that the installation is completed in accordance with all applicable grounding and safety codes.

Electrocution Hazard: Do not install or dismantle Radio Waves Inc. products near any type of power line. Should your antenna or related hardware come in contact with power lines you **could be killed!** Be sure your installation is out of falling distance of any overhead wires-including the lead to any building or structure.

NEVER OPERATE OR LOCATE THIS OR ANY EQUIPMENT NEAR POWER LINES

Electrocution Hazard: Portable or Mobile Installation.

If you are installing a Radio Waves Inc. component or part on a portable or mobile platform such as a Portable Tripod, Mast, Truck, or Van, be sure all safety procedures are followed and that operators have been properly trained. No one should be allowed to operate or set up the equipment that has not been properly trained.

Radio Waves Inc. is a component supplier and is not the system designer and has no control over how its products are used and installed. It is the responsibility of the System Designer, Van Manufacturer and Owner / Operator to be sure that the overall system is built in accordance with all applicable design and safety standards and procedures and that the operators have been properly trained.

NEVER OPERATE OR LOCATE THIS OR ANY EQUIPMENT NEAR POWER LINES