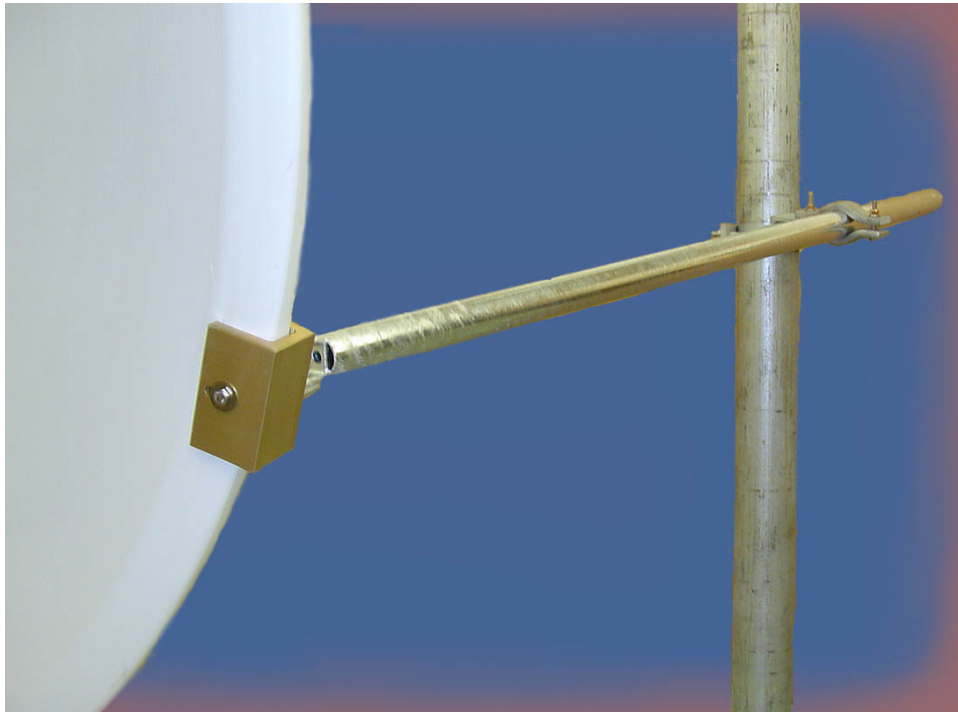


SST-8 Side Brace Sub-Assembly

Field Procedure



an INFINIT^e company

IMPORTANT!

Please read instructions through completely before beginning installation. Caution should be used. Qualified persons experienced with antenna assembly and installation are required for installation.

DISCLAIMER

Radio Waves Inc. disclaims any responsibility or liability for damage or injury resulting from incorrect or unsafe installation practices.

Your side brace sub-assembly shipped to you in one crate containing the following components:

1. Side brace sub-assembly

NOTE: Options and accessories are shipped separately and include separate installation guides. Check the packing slip.

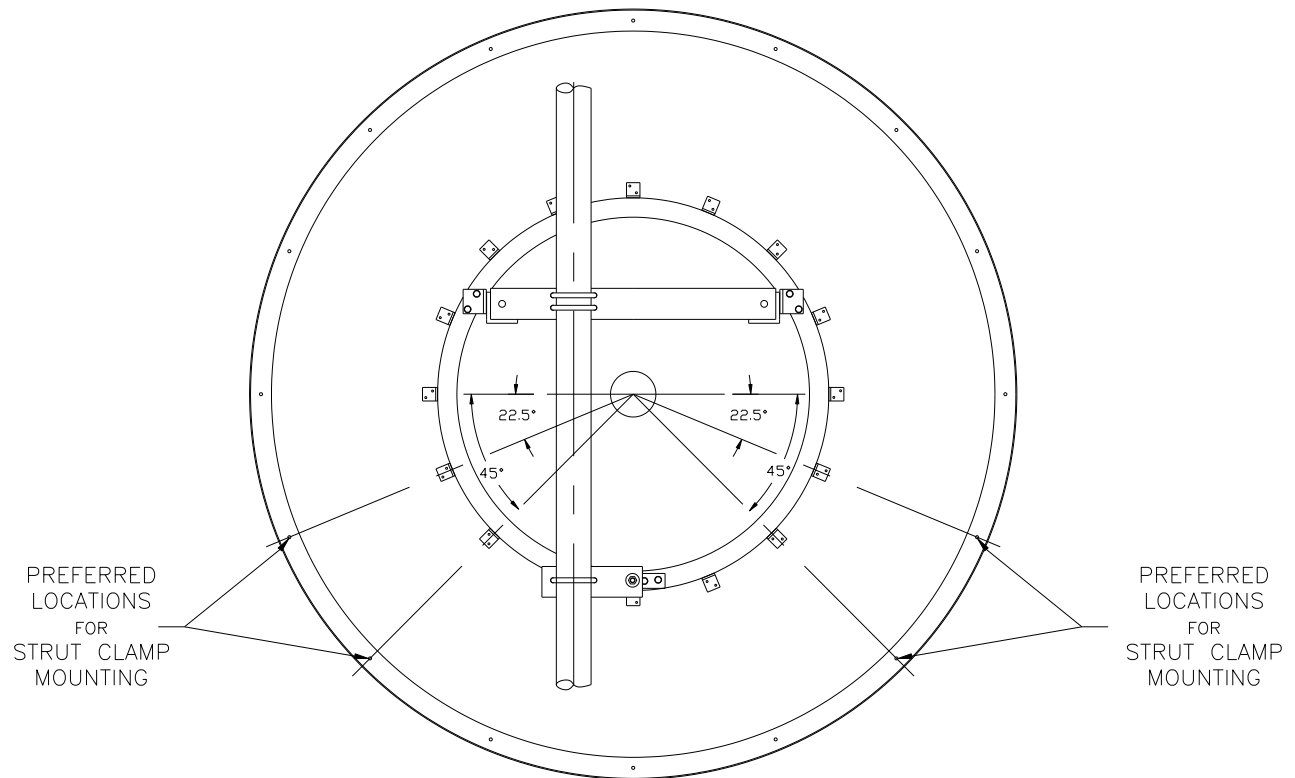
You will need the following tools to complete the assembly of the antenna at the site:

1. 3/8" Open/box wrench or socket wrench
2. 1/2" Open/box wrench or socket wrench
3. 1/4" Open/box wrench or socket wrench
4. Adjustable Wrench
5. Torque Wrench with appropriate sockets

NOTE: The pictures provided in this document are for illustrative purposes only and may not be identical to your antenna system.

Note: This kit may be used on an antenna with or without radome kit (RD8).

1. SELECT LOCATION FOR STRUT CLAMP PLACEMENT



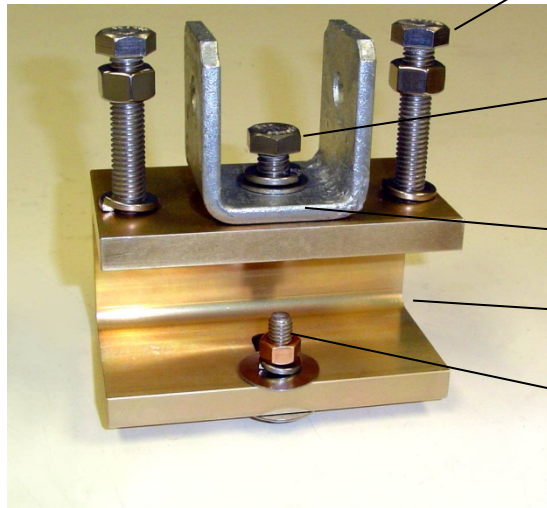
Strut will offer maximum reinforcement when located in preferred location. Other locations may be used if necessary.

2. **A.If radome kit is installed:** Remove bolt thru radome and reflector in position where clamp is to be mounted.

If radome kit is not installed: Drill 3/8" clearance hole in position where clamp is to be mounted (approx. 1-7/16" in from outer edge)

3. IDENTIFY COMPONENTS:

Antenna Clamp



(2X) Hex bolt, 1/2-13 x 3" SS
(2X) Washer, lock, 1/2 SS
(2X) Hex nut, 1/2-13 SS

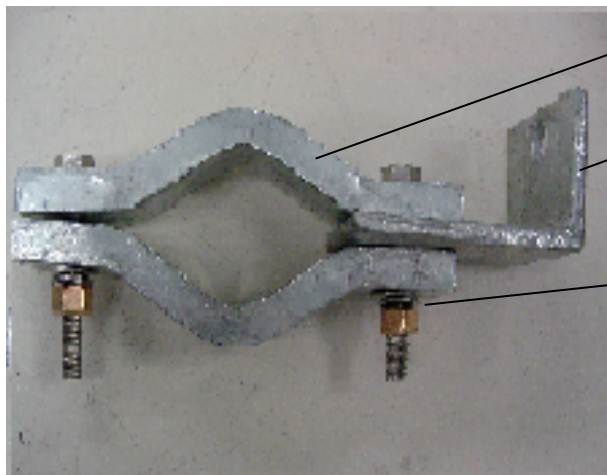
Hex bolt, 1/2-13 x 3 SS
Washer, lock, 1/2 SS
Hex nut, 1/2-13 SS

103676-1 strut bracket

104723-1 antenna clamp

Hex bolt, 3/8-16 x 1-3/4" SS
Washer, lock, 1/2 SS
Hex nut, 1/2-13 SS
(2x) Fender washer, 1/2" SS

Strut clamp

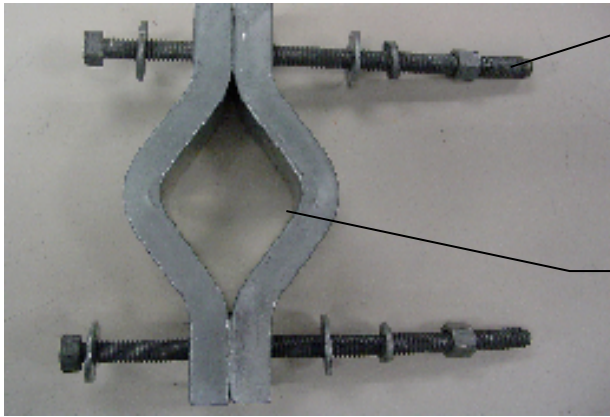


(2X) 102987-1 mntg. strap

102835-1 angle bracket

(2X) Hex bolt, 3/8-16 x 2 1/2" galv.
(2X) Washer, flat 3/8 galv.
(2X) Washer, lock 3/8 galv.
(2X) Nut, 3/8-16 galv.

Pole clamp



(2X) Hex bolt, 3/8-16 x 6" long
(2X) galv. Washer, flat 3/8 galv.
(2X) Washer, lock split 3/8 galv.
(2X) Hex nut, 3/8-16 galv.

(2X) 102987-1 mntg. strap

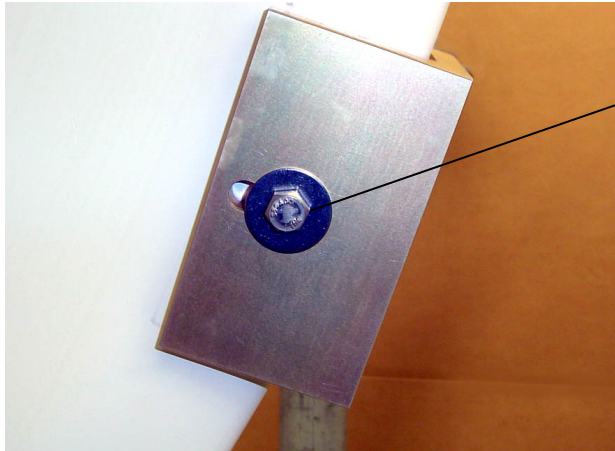
Strut



102398-1 strut

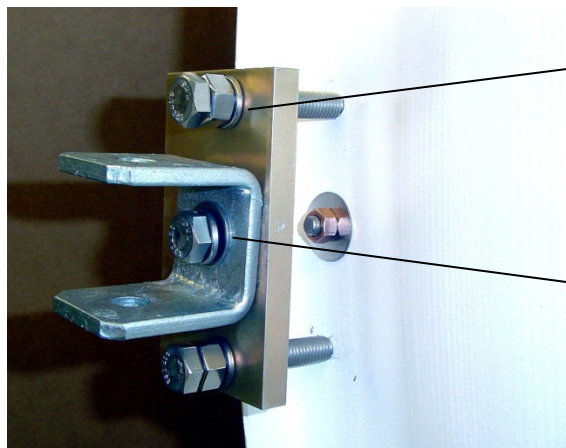
Hex bolt, 1/2-13 x 3" long galv.
Washer, flat 1/2 galv.
Washer, lock split 1/2 galv.
Hex nut, 1/2-13 galv.

4. Position antenna clamp on rim of antenna and install 3/8" bolt thru clamp and antenna and tighten.



3/8" bolt, flat washer near side.
Nut, lock and flat washer on
opp. side

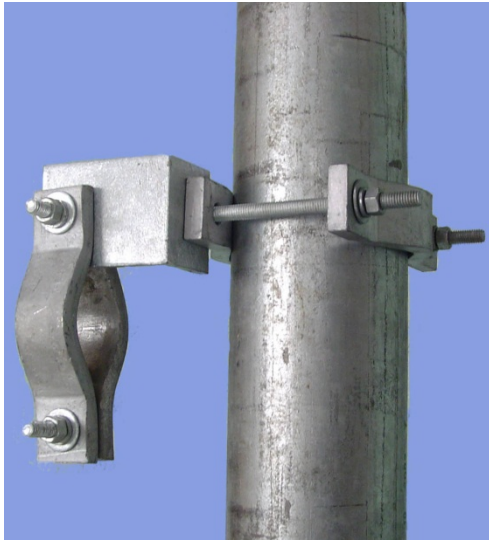
5. Tighten (2) 1/2" bolts to firmly grip reflector. Tighten (2) 1/2" lock nuts



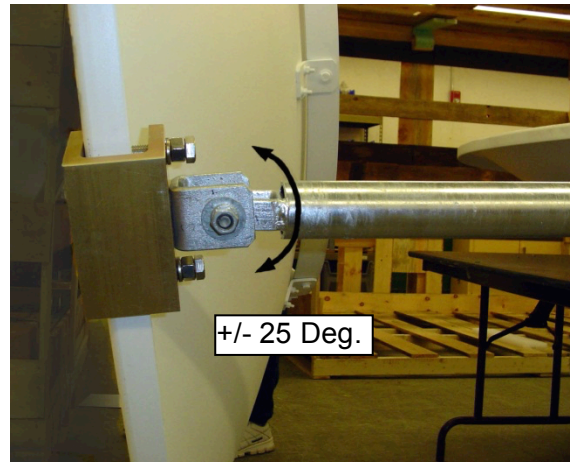
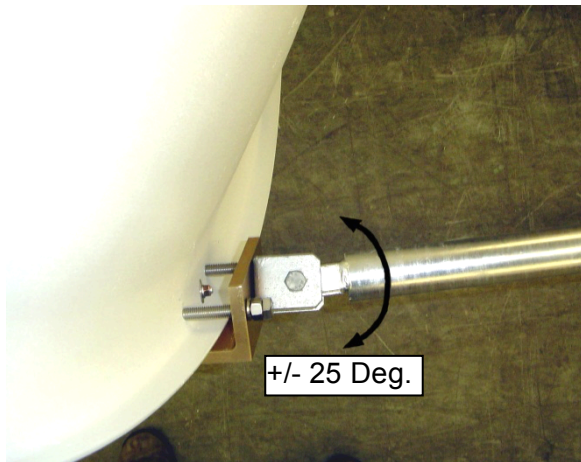
Tighten (2) 1/2"
bolts w/hardware

Do not fully tighten at this time

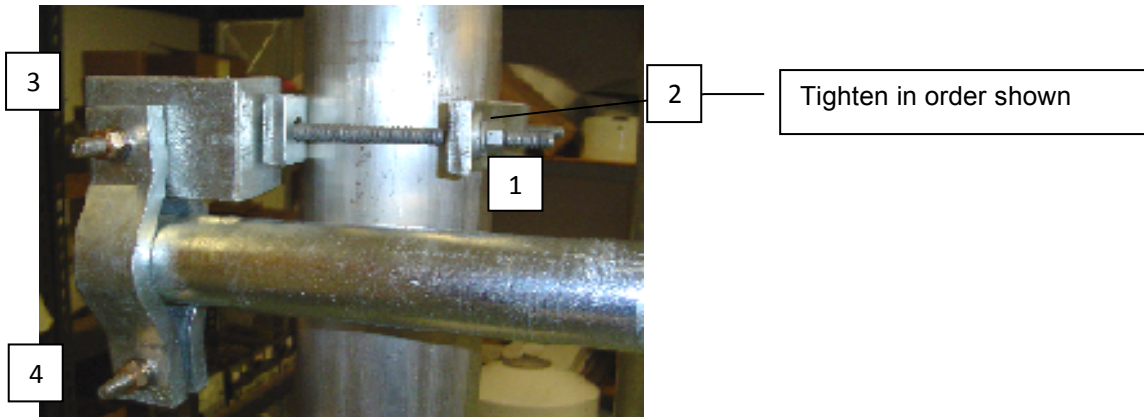
6. Determine location of pole clamp on supporting structure. Position so that strut will be within range specified in step 7. Tighten hardware finger tight. (Clamp will fit 2" to 4" OD pipe)



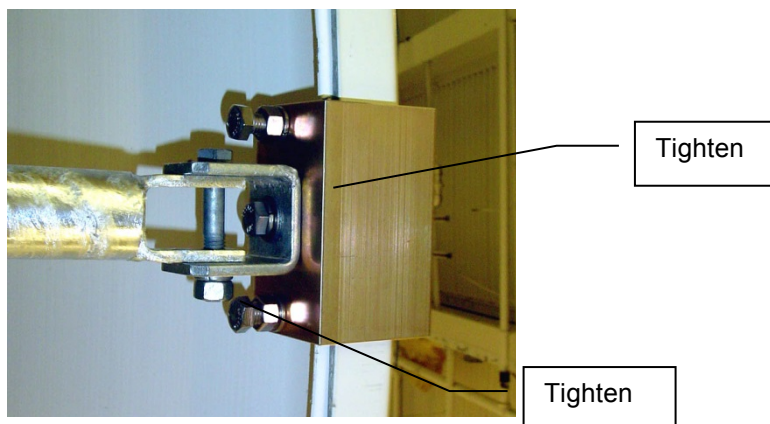
7. Attach strut positioned within range shown for effective reinforcement. Note: For strut reach over 5 feet add strut extension kit 104726-1.



8. Fasten opposite end of strut using clamps as shown. Do not fully tighten hardware until strut is in final position, then tighten in order shown.



9. Tighten Strut hardware. Check that all other hardware is torqued to spec. below



TORQUE SPECIFICATIONS

Tighten all hardware using torque specifications below:

Nominal Bolt Size (Inches)	Nut Torque
1/4	50 in-lb
5/16	102 in-lb
3/8	15 ft-lb
7/16	24 ft-lb
1/2	37 ft-lb
5/8	60 ft-lb
3/4	75 ft-lb

SAFETY INFORMATION

This Information May Save You From Death or Injury

Do not attempt to install or dismantle any Radio Waves Inc. products until you have read and understood the information and instructions in this document.

Installations: Only trained professional installers should be used to install or dismantle antennas, mounts, and related hardware. It is the responsibility of the installer to be sure that all building and safety codes are met and that the installation is complete and secure.

Lightning Protection: All antennas and related hardware must be attached to and connected correctly to a properly grounded structure. It is the responsibility of the installer to be sure that the installation is completed in accordance with all applicable grounding and safety codes.

Electrocution Hazard: Do not install or dismantle Radio Waves Inc. products near any type of power line. Should your antenna or related hardware come in contact with power lines you **could be killed!** Be sure your installation is out of falling distance of any overhead wires-including the lead to any building or structure.

NEVER OPERATE OR LOCATE THIS OR ANY EQUIPMENT NEAR POWER LINES

Electrocution Hazard: Portable or Mobile Installation.

If you are installing a Radio Waves Inc. component or part on a portable or mobile platform such as a Portable Tripod, Mast, Truck, or Van, be sure all safety procedures are followed and that operators have been properly trained. No one should be allowed to operate or set up the equipment that has not been properly trained.

Radio Waves Inc. is a component supplier and is not the system designer and has no control over how its products are used and installed. It is the responsibility of the System Designer, Van Manufacturer and Owner / Operator to be sure that the overall system is built in accordance with all applicable design and safety standards and procedures and that the operators have been properly trained.

NEVER OPERATE OR LOCATE THIS OR ANY EQUIPMENT NEAR POWER LINES